



Hyatt Regency Lost Pines Resort and Spa

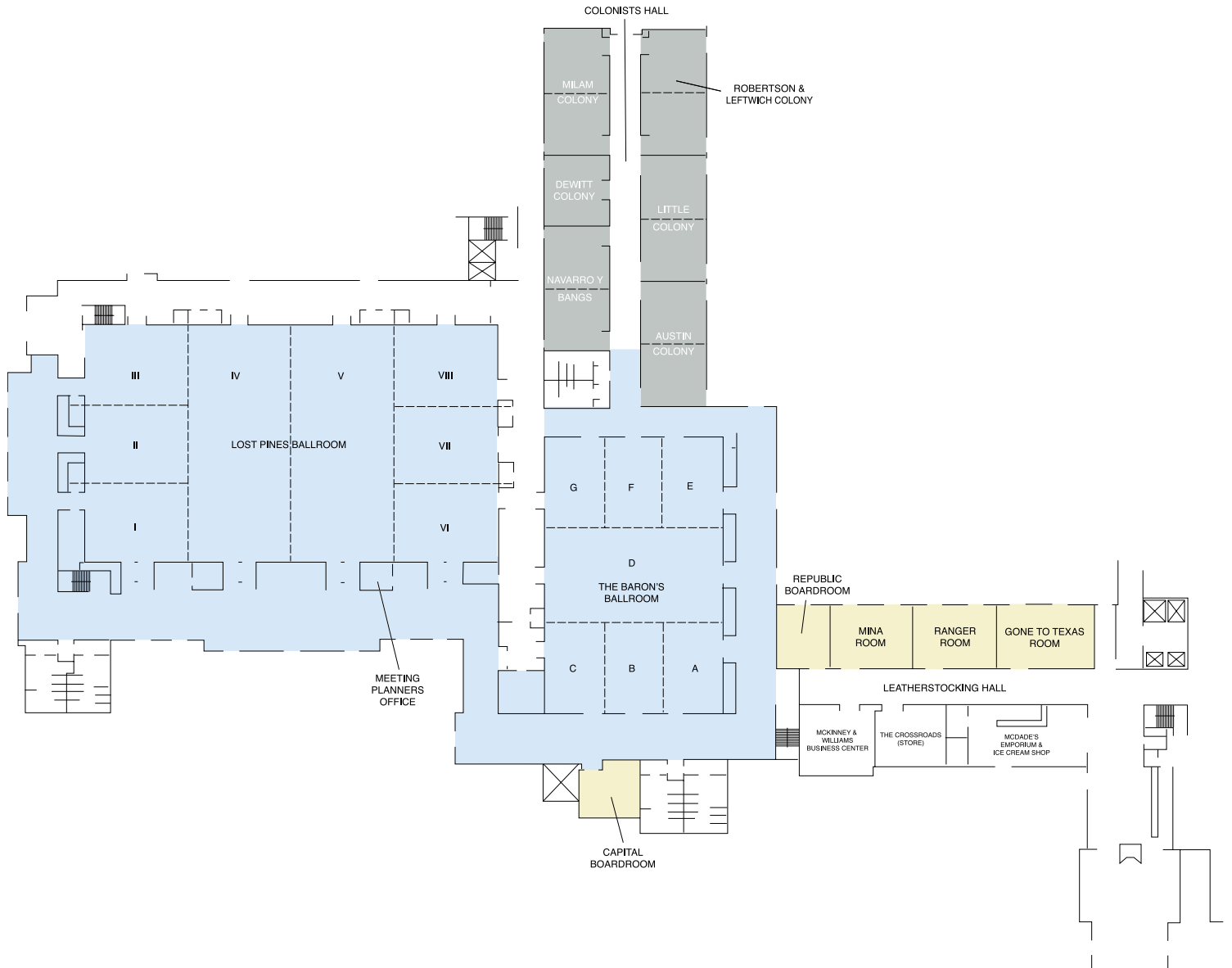
DIRECTIONS

FROM AUSTIN/BERGSTROM AIRPORT

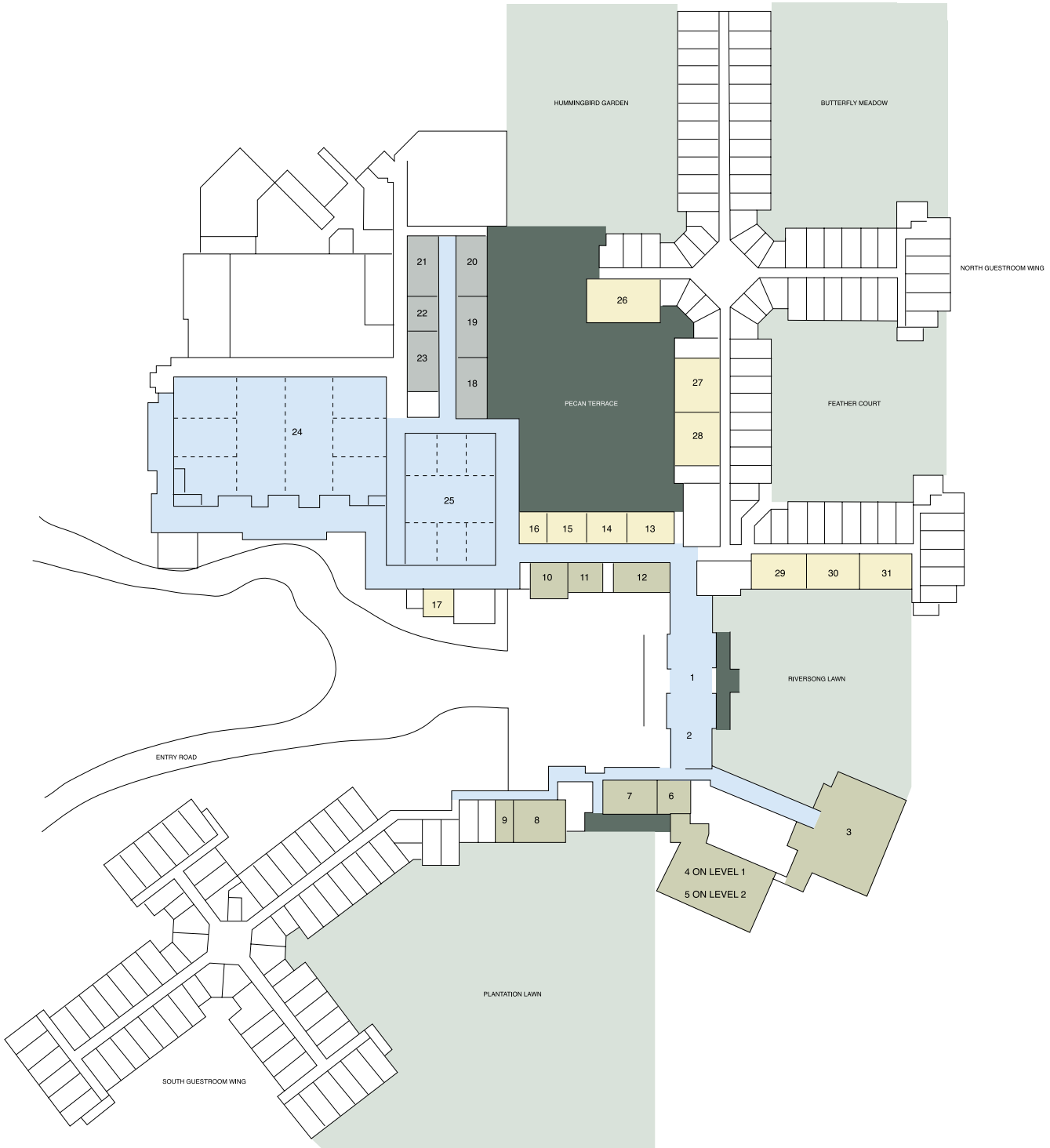
Exit airport. Head east on Highway 71 for 10 miles. Turn left at Hyatt Lost Pines Road.

FROM DOWNTOWN AUSTIN

Take Riverside Dr. 5 miles Southeast to Highway 71 and turn left (east). Take Highway 71 approximately 12 miles to Hyatt Lost Pines Road and turn left.



Hyatt Regency Lost Pines Resort and Spa



- EXTERIOR COURTYARDS / TERRACES
- BALLROOMS / PREFUNCTION SPACE / CORRIDORS
- MEETING / BOARD ROOMS / HOSPITALITY SUITES
- FOOD / BEVERAGE/RETAIL VENUES
- TERRACES / PORCHES

F&B / RETAIL SPACES

- 1 LOBBY
- 2 CARDINAL POINT (INTERPRETIVE CENTER)
- 3 FIREWHEEL CAFE
- 4 SHELLERS BARRELHOUSE BAR
- 5 STORIES (FINE DINING)
- 6 KESSELUS HALL (2ND LEVEL)
- 7 THE SCRIBES CLUB (LOUNGE)
- 8 CAMP HYATT, TORTUGA ROOM
- 9 THE WILD HARE YOUTH SPA
- 10 MCKINNEY & WILLIAMS BUSINESS CENTER
- 11 THE CROSSROADS
- 12 MCDADE'S EMPORIUM & ICE CREAM SALOON

MEETING ROOMS

- 13 GONE TO TEXAS ROOM
- 14 RANGER ROOM
- 15 MINA ROOM
- 16 REPUBLIC BOARDROOM
- 17 CAPITOL BOARDROOM
- 18 AUSTINS COLONY
- 19 LITTLE COLONY
- 20 MILLIAMS COLONY
- 21 ROBERTSON & LEFTWICH COLONY
- 22 DEWITT COLONY
- 23 NAVARRO Y BANGS

BALLROOMS

- 24 LOST PINES BALLROOM
- 25 THE BARON'S BALLROOM

HOSPITALITY SUITES

- 26 FAYETTE
- 27 TRAVIS
- 28 BASTROP
- 29 CALDWELL
- 30 LEE
- 31 WILLIAMSON